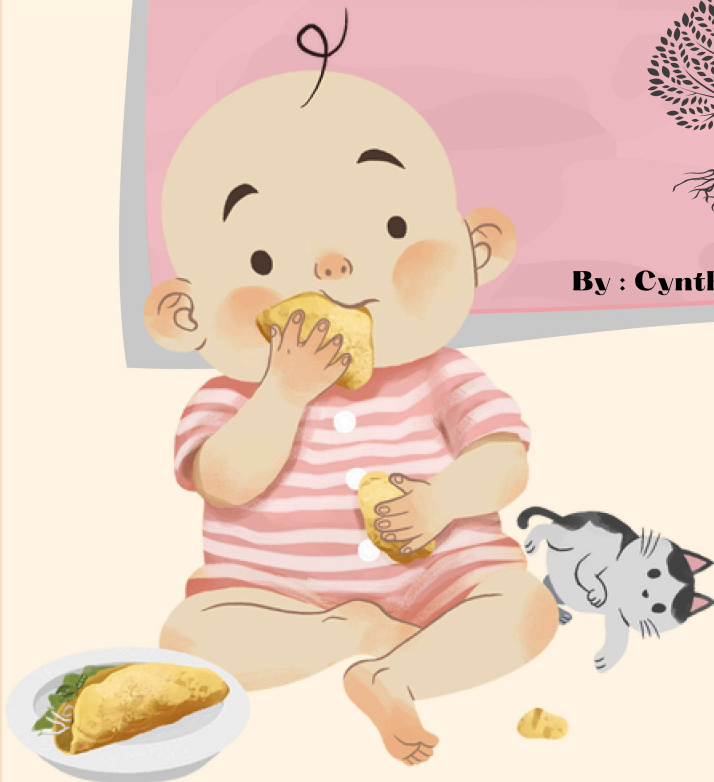


What is Early Intervention? Speech/Language

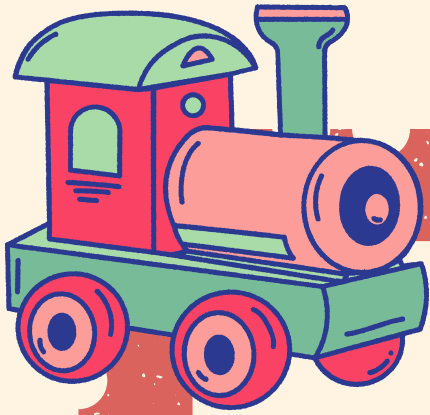
Early intervention speech-language therapy involves focus on speech-language milestones for children learning to talk and communicate between the ages of 18 months-3 years old. .



By : Cynthia Rodriguez



DISCLAIMER: PARENT CORNER IS INTENDED TO SUPPORT PARENTS THROUGH EARLY INTERVENTION THERAPY. IT DOES NOT SERVE TO REPLACE THERAPEUTIC SERVICES.



How it works!

Early Intervention speech-language therapy involves fun play activities, such as puzzles, toys, and books.

A play approach in speech-language therapy makes learning more enjoyable for toddlers. In play exercises, such as repetition, music and movement, and sign/gesture modeling encourage meaningful communication.

